

SUSS: A University serving our City

presented by H K Cheong, 18 Nov 2019 at UC2019





- One of 6 Autonomous Universities
- Began with PT UG programmes => CET
- Small FT
- Broad range of disciplines
- Applied

Education philosophy

HEAD Applied

HEART Social Sciences

HABIT Lifelong Learning

SUSS today

'Degree'
Students
14,614

Total Staff
652

Programmes
83

Alumni
35,292

Faculty (FT)
204

Acad Units
5 Schools
1 College

FT graduates
419

Associates
2003

Industry
Partners
108

As at 30 June 2019



Serving our City's needs

Careers, Learning
& Living

Social Good



Careers, Learning & Living



Providing for a range of learners

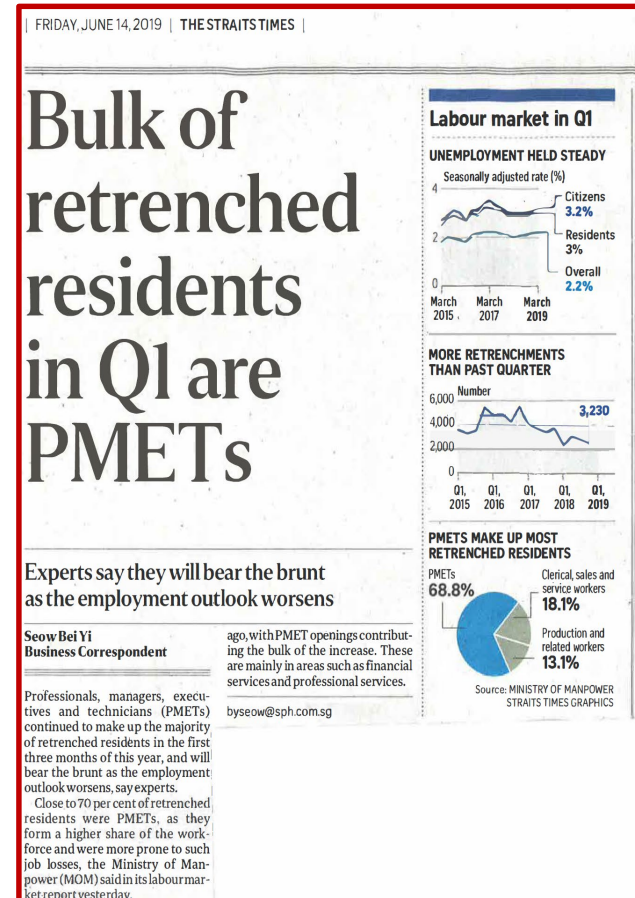
Fresh school/
poly- leavers
looking for Q

Working adults
looking for Q,
to advance or
in transition

Working
adults needing
CET

Casual
learners;
Pleasure
learners

Working
adults facing
job
dislocation



Experiential learning & entrepreneurship



Teambuilding

China; Indonesia; Vietnam



Overseas Experiential Learning

Social & cultural practices; business landscape; entrepreneurship ecosystem

Youth Expedition Projects; Global Service Learning

ASEAN, China, Middle East



Overseas Work Attachments

Cambodia, China, Indonesia, Japan, Laos, Myanmar, Thailand, Vietnam



Entrepreneurship

Bootcamp (China, Indonesia, Cambodia, Taiwan, Vietnam, Singapore). Training → Formulation → Start-ups & VC \$



Qualification-upgrading programmes

- **Tamil Language & Literature programme**
- Started 2006
- For teachers
- Obviated need for residential requirement in India
- 300 trained; 55% teachers



- **Law programme**
- Focus on family & criminal law
- Stringent selection needed



Professional conversion programmes (PCP)

- **Social Work programme**
- Need for practising professionals
- Interest from other professionals – engineers, accountants, bankers, disrupted employees
- Training with service bond
- Either UG/PG
- Total trained ~ 200
- Low leakage



Work-Study programmes (WSP)

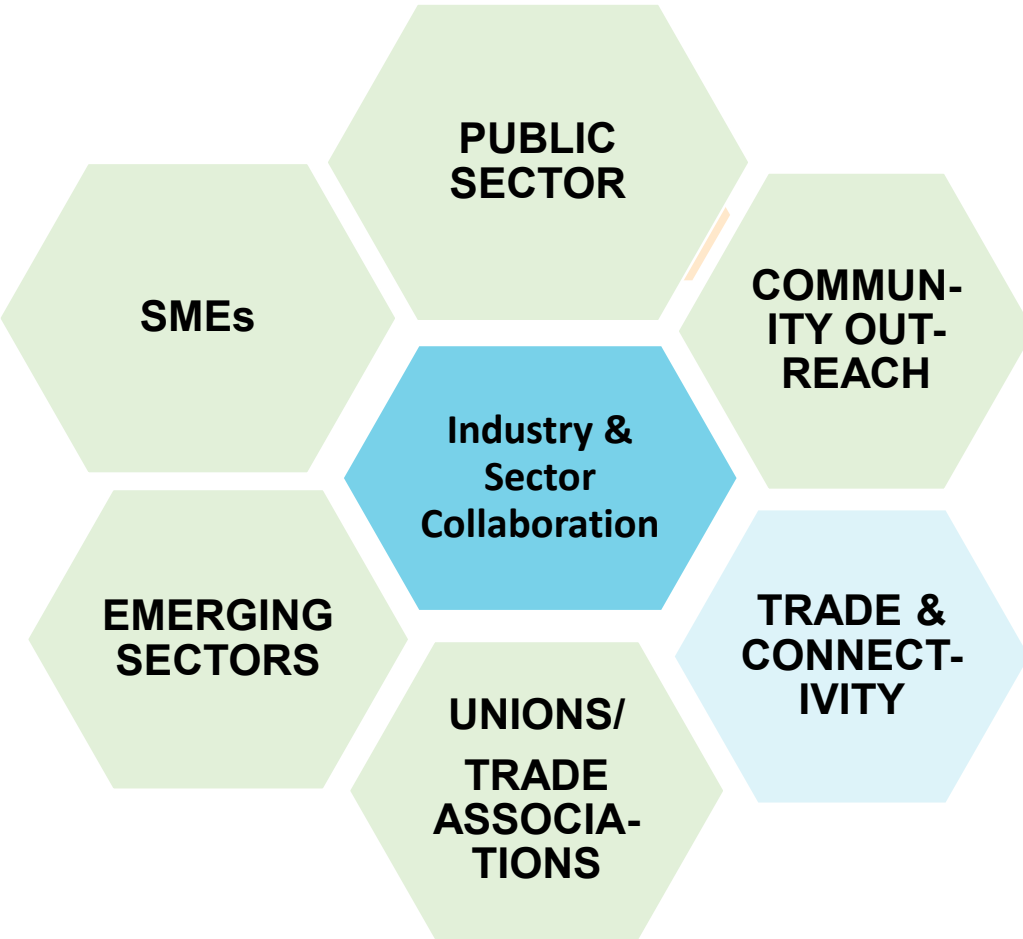
- With NTUC First Campus
- For those in service
- Recognition of experience
- Reduced credit & time requirement to graduate
- Concurrent training in place for credits

Other disciplines being explored:

- Facilities Management
- HRM & FM
- Biomedical Engineering
- Business Analytics
- Social Work
- ICT



Strategic partnerships with Industry & Social Organisations



Development prog for MHA officers

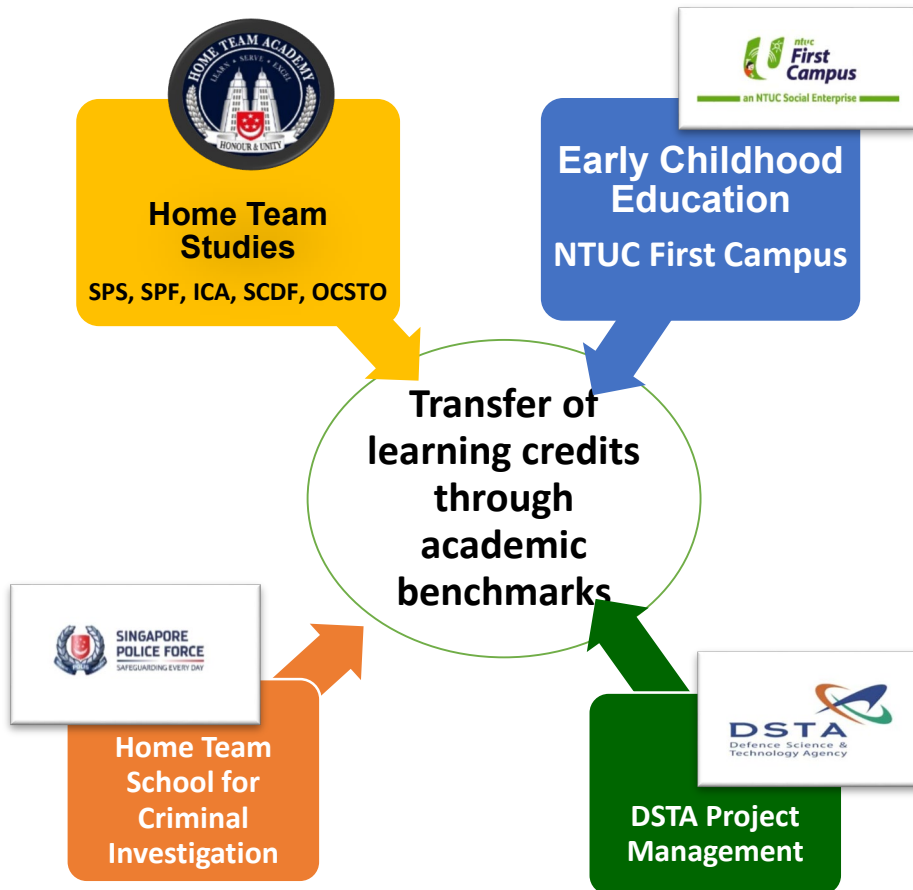


Executive Mgt Prog for Towkays



Recognising learning

Through accreditation



Through RPL

Recognises knowledge, skills & competences acquired in **informal and non-formal** settings such as the **workplace**.

Requires Individual, employer, institution/training provider, professional bodies, public agencies, career advisory

SKILLS IDENTIFICATION

SKILLS GAP ANALYSIS

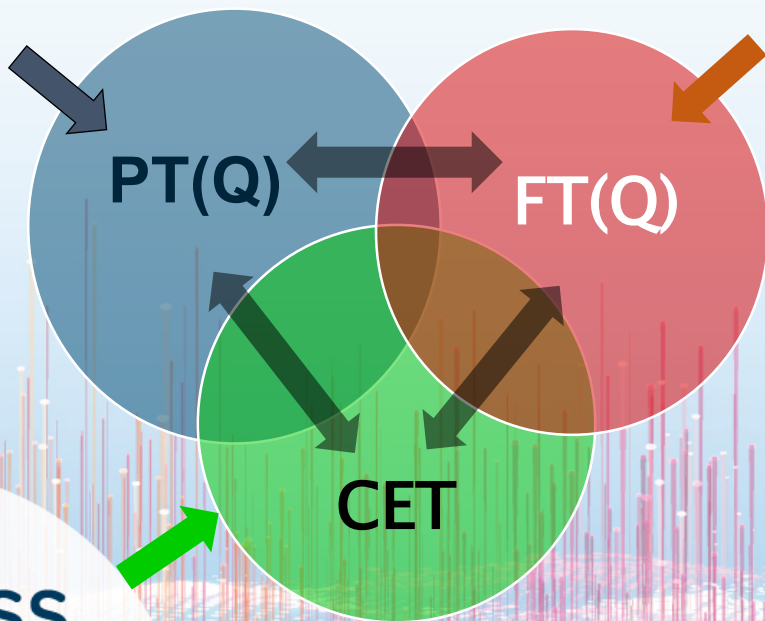
SKILLS VALIDATION

IMPACT

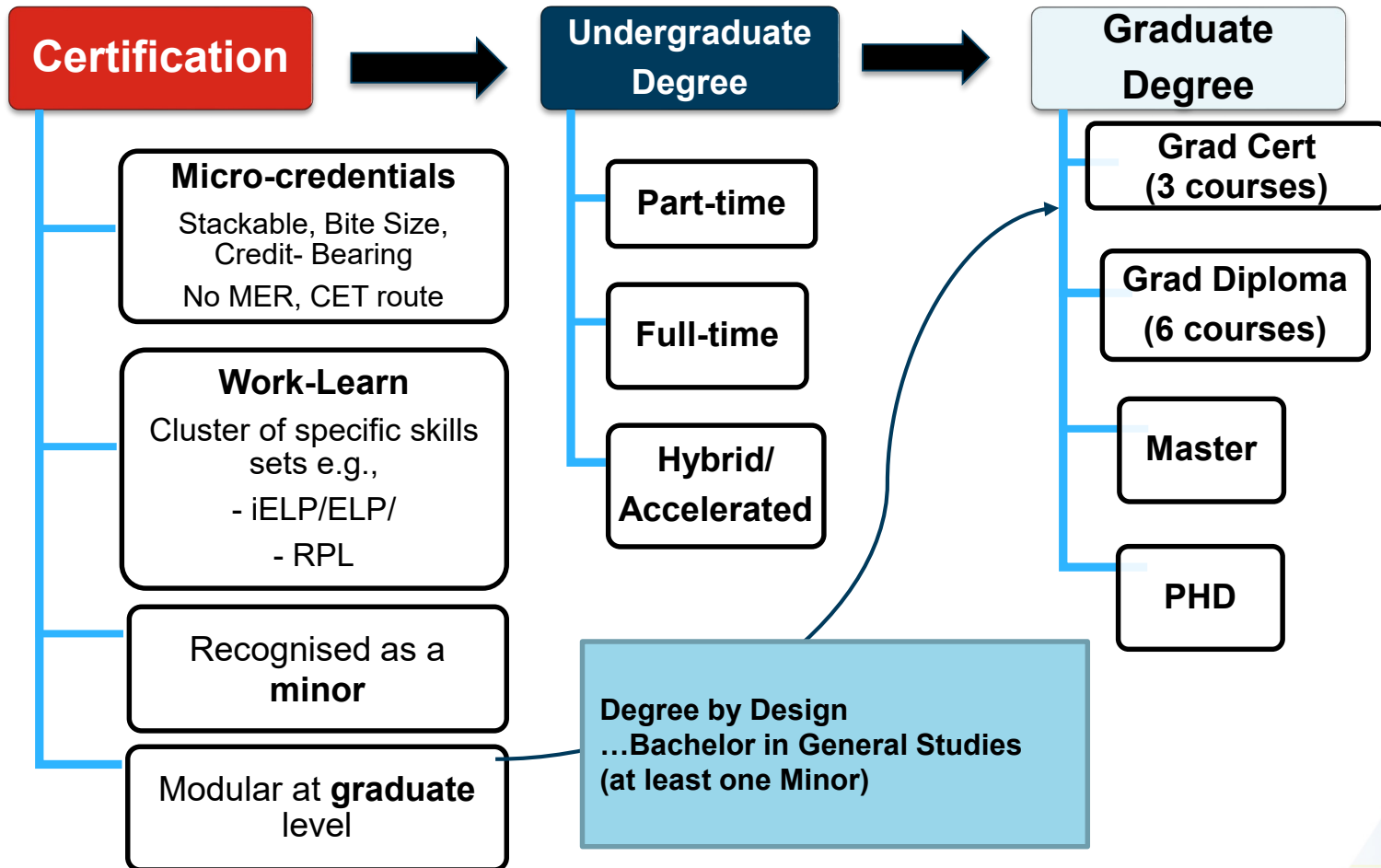
EMPOWERS & UNDERSCORES LIFELONG LEARNING



SUSS Learning System designed for adult learning



Stack-able Qualification System

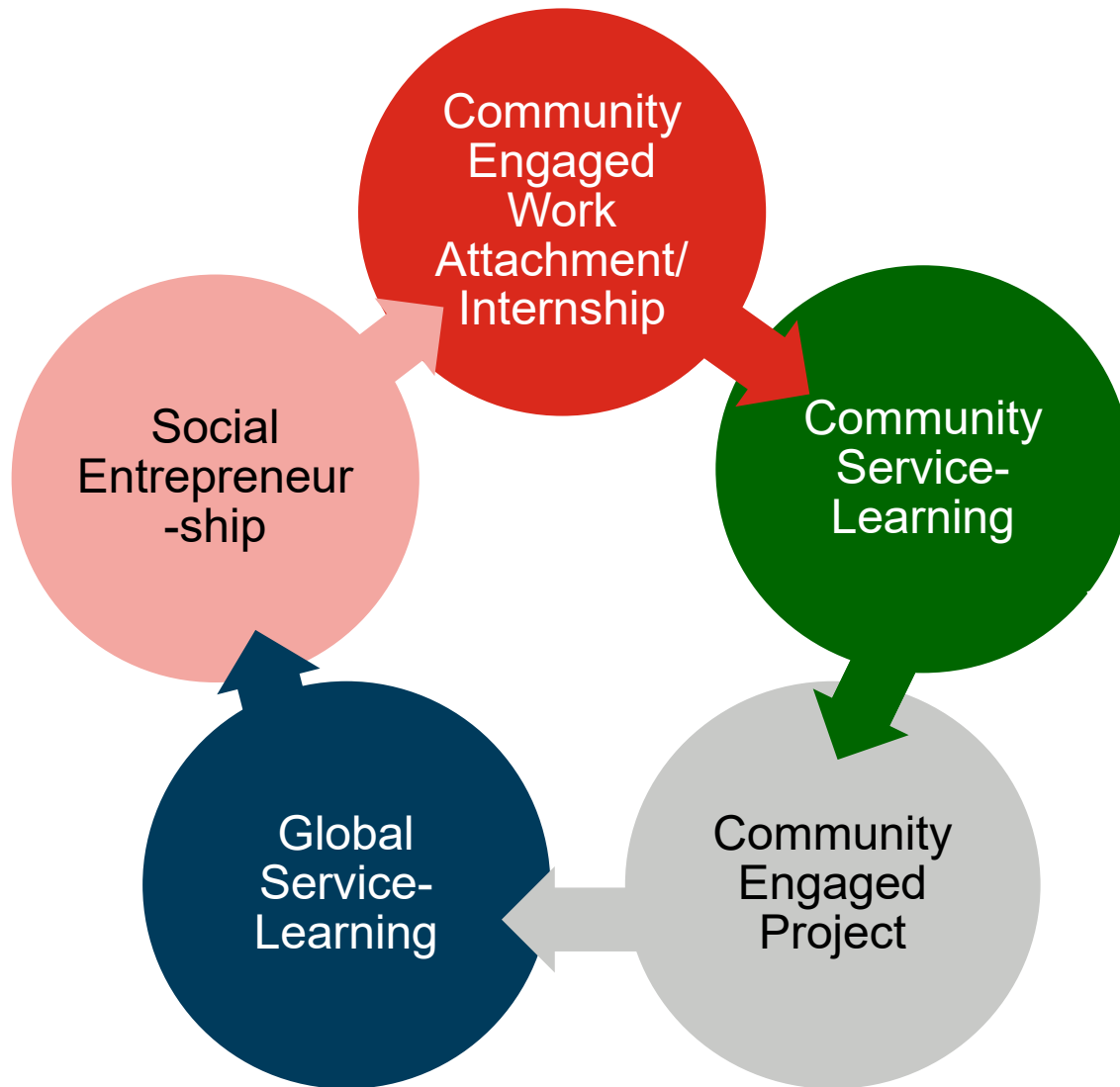




Social Good



Service Learning & Social Sciences as horizontal



**Embed /
Integrate
Social
Sciences in the
curriculum
=> DNA of
thinking &
paradigm in
graduates**

MOU SIGNING CEREMONY

COMMISSIONER OF CHARITIES
&
SINGAPORE UNIVERSITY OF SOCIAL SCIENCES

17 JULY 2019



**Coming alongside
social organisations**

With COC:
Training for governance,
volunteer management,
communication, etc.

Yayasan Mendaki to
collaborate with SUSS
on data analytics



SUSS UniLEARN Social Enterprise Network

SUSS UniLEARN

- e-learning initiative by SUSS for the community focussing on social concerns in society.
- Enables partners to offer online courses to general public, volunteers & those who work in related fields.



Impact of research on policy formulation & implementation

Focus of research output on policy-relevant issues in partnership with agencies

Minister calls for closer partnerships between govts and academics

Choo Yim Ting

Global economic and social volatility makes this an opportune time for closer partnerships between governments and academics, said Education Minister Ong Ye Kung yesterday.

He told the Singapore Economic Review Conference that the changing global economy - with trade disputes, low interest rates and technological contests - provides challenges for governments.

"Democratic governance will be put to the test, made more difficult by falsehoods that will cloud pertinent information and data, thus hampering collective decision making," he added.

The three-day biennial conference started yesterday and will be attended by about 330 leading economists and business people, as well as past and present policymakers from nearly 40 countries.

Speakers at the opening plenary session discussed the threats to the global economic system, including the impact of populist politics, ageing populations and the potential slowdown of China's economy.

Professor Lee Jong Wha from Korea University said that amid an uncertain global environment, country leaders and policymakers must strengthen democratic institu-

tions, while addressing citizens' economic insecurities and social grievances.

Nations must also pursue policies to strengthen domestic and regional sources of growth and improve structural weaknesses, he added, as "global growth will remain sluggish and downside risks are high".

Professor Danny Quah from the Lee Kuan Yew School of Public Policy at the National University of Singapore spoke about the risks of countries' increasing unwillingness to engage in multilateral cooperation.

Quoting Greek historian Thucydides, he said that in both international and regional politics, "the strong do what they will, the weak suffer what they must".

Strong nations will decide the outcomes of the new world order, while small nations like Singapore will suffer the consequences, Prof Quah noted. But multilateral action by all nations can help determine the form of world order, he said.

Mr Ong also noted several questions that he believes governments around the world are concerned about - what drives a country's competitiveness, how to ensure innovation-led growth benefits everyone in society, and how global trends such as climate change and ageing workforces will impact economies.

He called upon conference dele-



From left: Panellists Hoon Hian Teck from Singapore Management University, Charles Horioka from Peking University, Danny Quah from the Lee Kuan Yew School of Public Policy at the Technological University at the opening plenary session of the Singapore Economic Review C

gates to discuss these questions, alongside pressing macroeconomic and international finance issues such as over-dependence on monetary policy for short-term stimulus and new risks to financial stability from cyberthreats.

Kobe University's Professor Charles Horioka, who specialises in

macroeconomics, household economics, and Japanese and Asian economies, spoke about population ageing as one of the long-term global economic threats.

Labour and capital shortages, as well as strains on government finances due to expenditure on social protection schemes, are likely

implication, he said. The core event of Economic

C3A

Ageing

Mature Workers

Facilities

Products & Services

NTUC. BCA, EMP
OTCi. JTC
MOM.
TAFEP

Well being

Family

Unrepresented persons

Youth

ST
MINDEF

State Courts
Comm Justice Centre

MSF
PA

Building capacity in adult learning

Network of adult
learners

Advocacy

Professionalisation of
learning providers

Thought leadership

Innovation of learning
solutions

Research on impact

Advancement of
workplace/enterprise
learning

International
Connections

Questions

- With the emphasis on skills, will there be over-vocationalising?
- With bite-sized and modular learning to suit need, will there be coherence in knowledge acquisition?
- With more open admission, how can academic rigour be kept?
- With more getting degrees, will there be adequate jobs for graduates?
- Will the degrees universities issue remain useful as in the past?
- With more learning providers & employers coming in, will universities become less relevant or play second-fiddle?
- How do we measure the impact of universities and the graduates they turn out on the industry & society?

THANK YOU

